



BlackBerry user guide for Korean Character Input

Features and specifications

- Supports Korean Character Input for SMS, MMS, email, PIN messages, address book, calendar, tasks, MemoPad and browser
- Provides Korean keypad (does not contain “Quick Korean”).
- Supports conversion from Korean to Chinese characters (does not work in “Quick Korean”)
- Korean characters will be encoded in unicode.

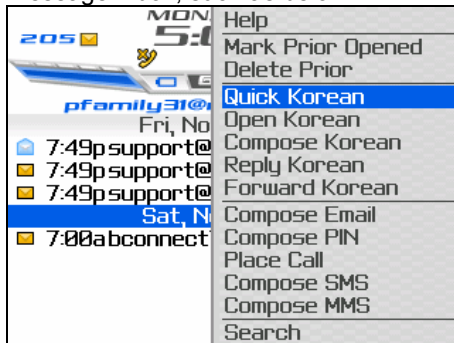
Note

- User should have BlackBerry handheld software Chinese version & multilanguage version (handheld software version 4.1 or greater) installed, with Korean characters and fonts support software.
- Only supports BlackBerry 8700g and 8707g models.

Installation

Please follow instructions to install PCCW’s mobile Korean Character Input:

1. Click “WAP browser” to go to PCCW mobile WAP site (<http://wap.pccwmobile.com>).
2. Select “BlackBerry”
3. Select “Korean Character Input”
4. Select “register”. This requires you to enter your BlackBerry PIN (note: BlackBerry PIN can be checked in “options->status”).
5. After registration, you can download and install software through a link provided in the portal. You may be required to reboot the device.
(Besides downloading the software over the wap site, you can also download it through the PC Desktop Manager. Please refer to the “Alternative way to download Korean Character Input” in the below section).
6. You will receive a welcome SMS within 30 minutes. This SMS contains an activation code.
7. After installation and restart, you will find a list of Korean Character Input related functions in the message inbox, such as below:



You can also find “Quick Korean” in other applications menus such as address book, calendar, tasks and MemoPad.

8. Korean Character Input license cost will be charged to your mobile bill on registration.
9. Korean Character Input can be used after activation (reference: Korea Input Activation).

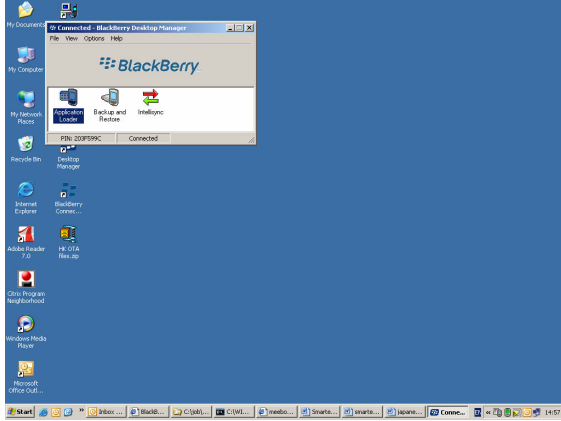
Remarks: If you have downloaded a previous version of PCCW mobile Korean Character Input, please uninstall before installing the new version (reference: Removal of Korean Character Input).

Alternative way to download Korean Character Input

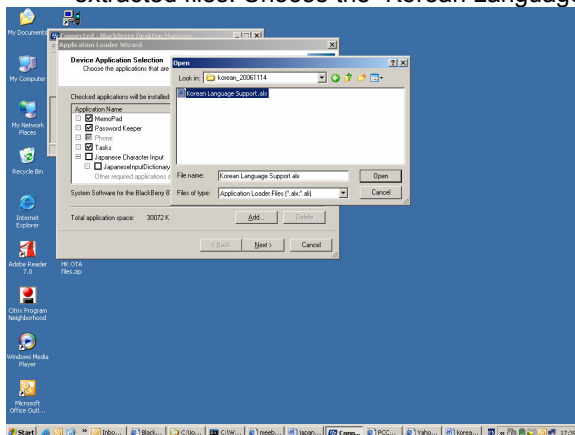
Besides installing PCCW mobile’s Korean Character Input application via wap site, you may also download it through PC Desktop Manager.

- (i) Download the ZIP package through PCCW mobile web site
- (ii) Go to <http://www.pccwmobile.com>,

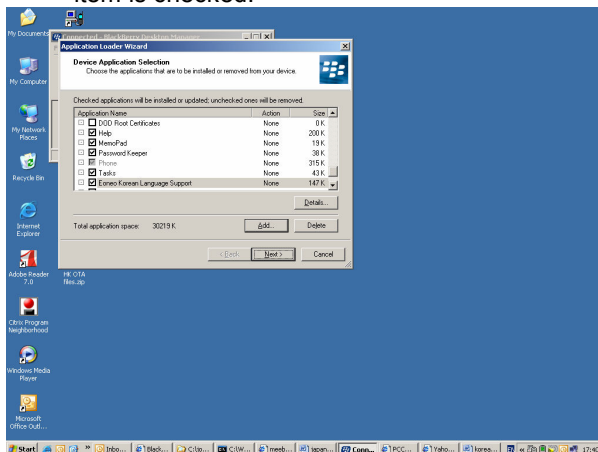
- (iii) “For Your Business”->”BlackBerry”->”Information Downloads”.
 - a. Extract the files in the ZIP
 - b. Connect BlackBerry with your PC via USB.
 - c. Open the Desktop Manager
- (iv) Go to “Start”->”Programs”->”BlackBerry”->”Desktop Manager”



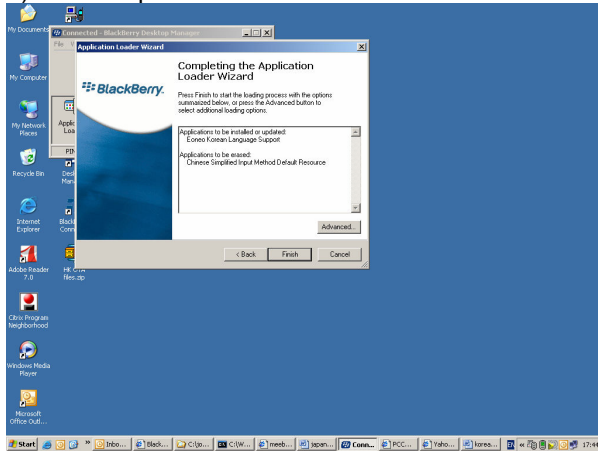
- (v) Double-click on Application Loader and press “Next”.
- (vi) In the screen “Device Application Selection”, press “Add” to select the folder that stores the extracted files. Choose the “Korean Language Support.alx”, and then press “Open” button:



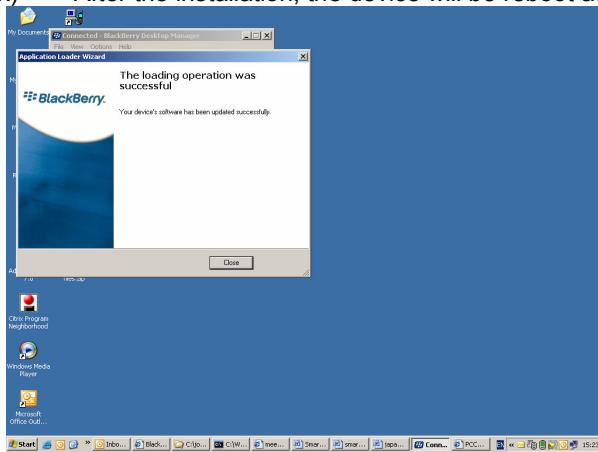
- (vii) “Eoneo Korean Language Support” will be added into the Application list. Please make sure this item is checked.



(viii) Then press “Next” and “Finish”.



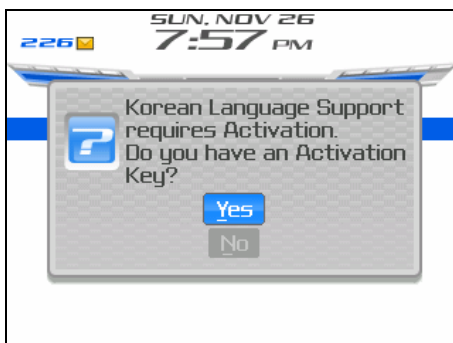
(ix) After the installation, the device will be reboot automatically.

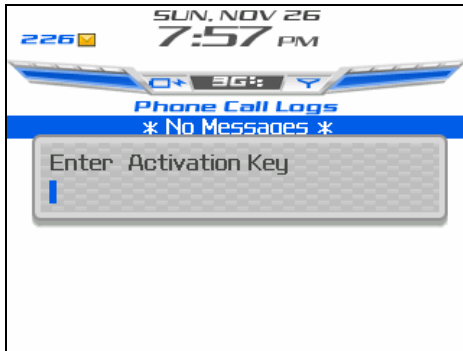


Korean Character Input activation

After you have installed the software, you may need to perform activation the first time you use the service.

Application will prompt an activation request. You are required to enter the activation code given by the welcome SMS. You can press shift and roll the trackwheel to highlight the activation code. Then, click trackwheel and choose “copy”.





The activation code is a 10-digit character line comprising 0-9 and a-f characters. Enter the code accurately (or paste the code if you copied it from the SMS) and push the trackwheel button. If the activation code is entered accurately, you can use the Korean language support function freely. Once you enter the activation key, you will not be asked for it again.

Input Korean

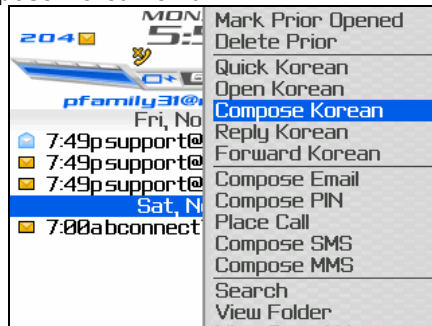
Two ways to input Korean characters when composing an email:

1. "Compose Korean"
2. Open "compose email" -> "Quick Korean"

You can only choose "Quick Korean" in the menu to input Korean characters when using all other applications, such as composing SMS, MMS, PIN message, MemoPad, tasks, calendar, browser and address book.

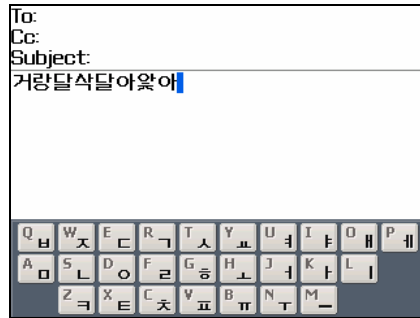
Messages, SMS messages and phone logs cannot be opened in Korean view mode.

1. Compose Korean email

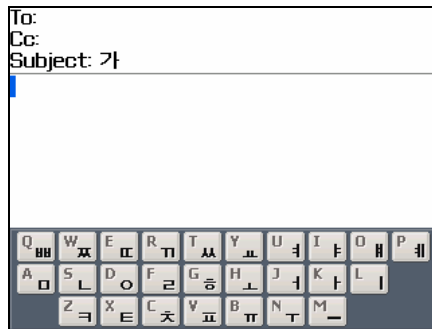


- a. You are unable to input Korean characters in "to" and "CC" fields
- b. Input Korean

A QWERTY virtual keypad will be displayed at the bottom when you move to the control to input Korean. Try a few keys on the device to enter Korean. Entry method is the same as when entering Korean from an ordinary PC keyboard.



Phonemes that do not show on the virtual keyboard, including doubled-consonant “ㄲ”, or doubled-vowel “ㅓ” can be typed by pressing Num or Cap keys. After pressing Num or Cap, you can type double phonemes (same effect as pressing SHIFT in the PC).

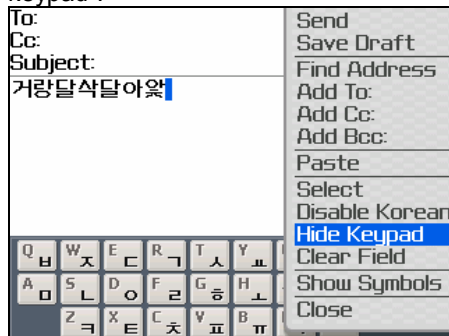


If you press a character button while pressing Alt in Korean mode, characters printed on the top-side of each button will be entered. In other words, if you press Alt and then “W”, you can enter the Arabic number “1”.

Using “Alt” and “trackwheel”, you can move the cursor by the character the same way as in English mode. If you have to make a correction, you can move the cursor around.

c. Hide/show keypad

If you want to remove the virtual keyboard from the screen, you can go to the menu to select “hide keypad”, but if you want to see the virtual keyboard again, go to the menu to select “show keypad”.



To:
Cc:
Subject:
거랑달삭달아왔

d. Conversion from Korean to Chinese characters

If you want to enter Chinese, you can enter Korean pronunciations of Chinese characters first and then select the menu for conversion to Chinese. For example, if you enter “아” and go to the menu, you can find “아 to Hanja” item. If you select this item, Chinese characters matching the sound “아” will appear onscreen. Use the trackwheel to select and enter the Chinese character you want to enter.

To:
Cc:
Subject:
아

Q	W	E	R	T	Y
A	S	D	F	G	H
Z	X	C	V	B	N

Send
Save Draft
Find Address
Add To:
Add Cc:
Add Bcc:
Paste
Select
Disable Korean
Hide Keypad
아 To Hanja
Clear Field
Show Symbols
Close

To:
Cc:
Subject:
아

亞 俄 兒 啞 娥 峨 我 牙 芽 莪 衙 訶 阿 雅
餓 鴉 鵝

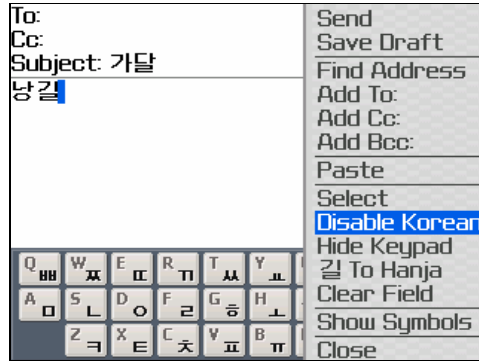
Q	W	E	R	T	Y	U	I	O	P
A	S	D	F	G	H	J	K	L	
Z	X	C	V	B	N	M	-		

Korean characters will be replaced by selected Chinese character by pressing the trackwheel:

To:
Cc:
Subject:
我

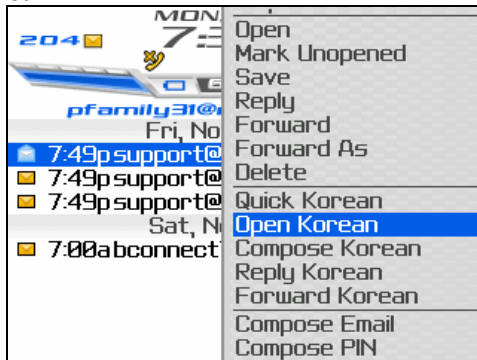
Q	W	E	R	T	Y	U	I	O	P
A	S	D	F	G	H	J	K	L	
Z	X	C	V	B	N	M	-		

- e. *Convert from Korean to English mode* (assuming your BlackBerry default mode is English)
 Press the trackwheel and select “disable Korean” to disable input of Korean characters.



If changed to English mode, the virtual keyboard disappears from the screen. If you want to go back to Korean mode, display the menu by pressing the trackwheel and selecting “enable Korean”. If you find it difficult to convert between Korean and English every time, press Alt key and then Space key (however, this shortcut key does not work when your BlackBerry default mode is Chinese).

2. Open Korean

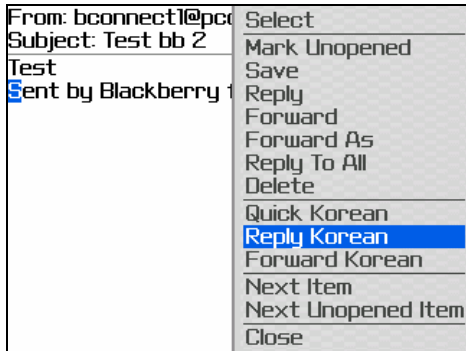


In the case of a broken Korean message, move the focus of the list to the broken message, and show the menu onscreen by using the trackwheel. If you select “open Korean” from the menu, the code changes so that broken emails can be displayed as readable (if your device is registered under BES, Korean email messages will be intact, but BIS-registered devices may produce broken Korean messages).

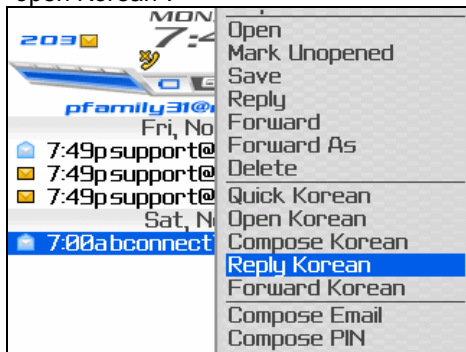
If you open an email with “open Korean”, you can check to see if an attachment exists, but you will be unable to open the attachment. If you want to see the attachment, use “open” menu.

3. Reply in Korean

If you want to reply in Korean after reading a received email, choose “reply Korean” from the menu:

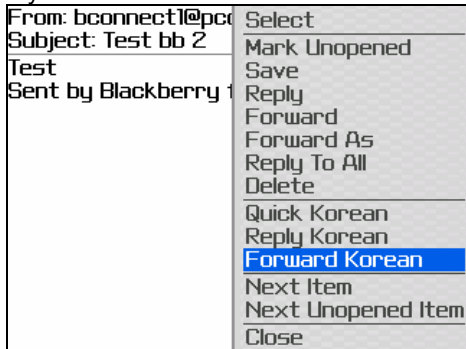


Or you can choose “reply Korean” from the menu by displaying the message with either “open” or “open Korean”.

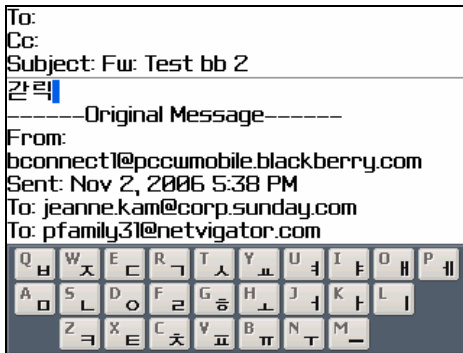


4. Forward Korean

If you want to forward a received email in Korean, select “forward Korean” from the menu:



Or you can select “forward Korean” from the menu while the message is displayed onscreen by “open” or “open Korean”.



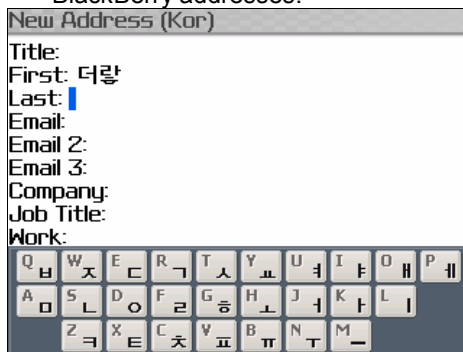
5. Address book

a. New address Korean

If you want to add a Korean address entry, display the menu onscreen by using the trackwheel and choosing “new address Korean”.

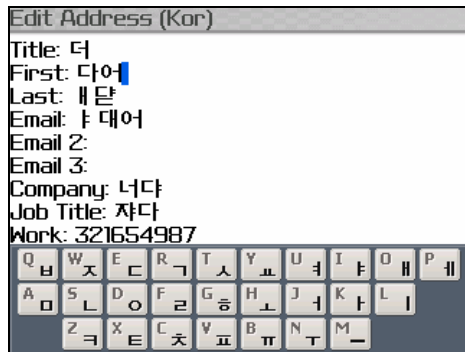


If the screen for address editing shows up, you can edit content in the same way as editing basic BlackBerry addresses.



b. Edit Korean

If you want to revise the existing address book in Korean, choose “edit Korean” from the menu.

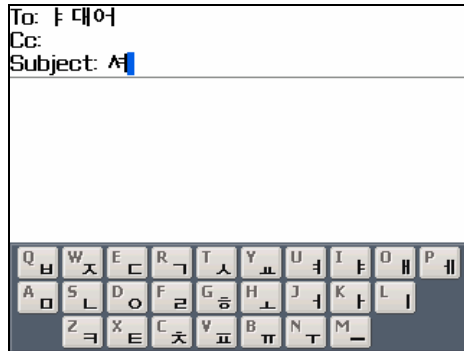


c. Email Korean to

You can send Korean email from the address book list. If you want to send Korean email to a specific contact from the address book, first select the contact and then “email Korean to” from the menu.



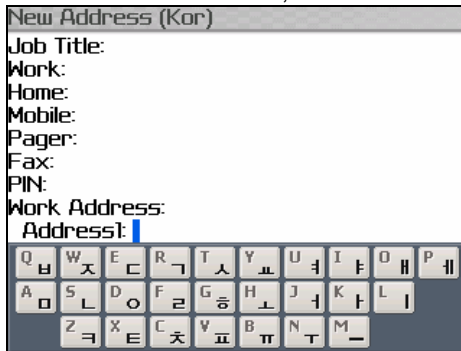
Now, the screen will be converted to Korean email editor mode with the selected contact address automatically in the “to” field.



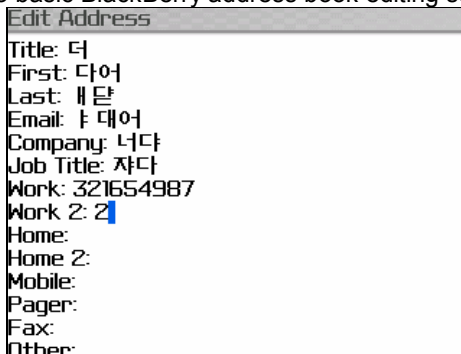
- d. Quick Korean
Please refer to “Quick Korean” in below section.

Note

Korean address editing screen does not provide Work2 and Home2 phone numbers. So, if you want to use a phone number under Home2, enter Korean address entry first and then save it.



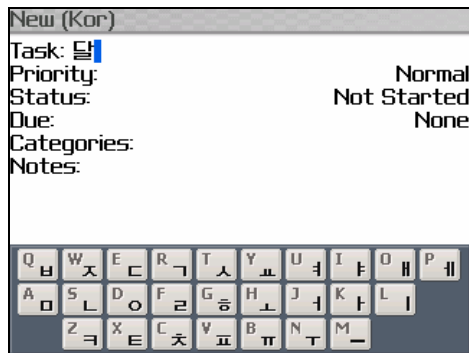
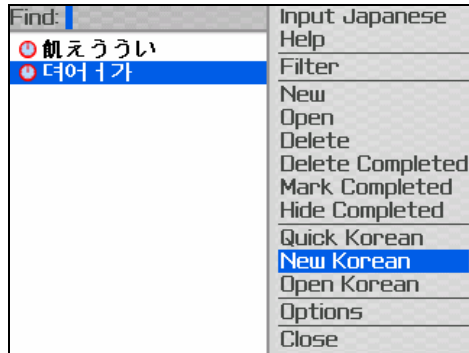
Convert to basic BlackBerry address book editing screen by using “open” menu.



6. Task

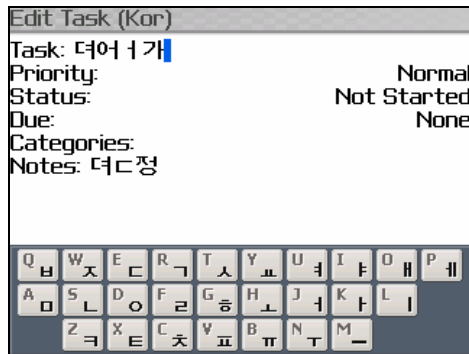
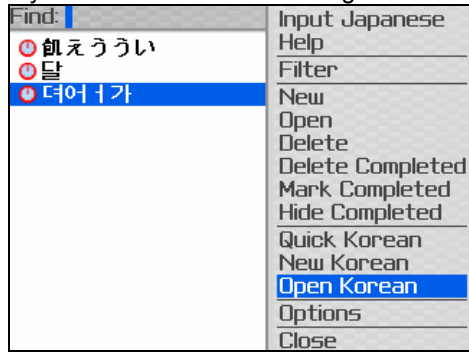
- a. New Korean

If you want to add a Korean task item, use the trackwheel to display the menu onscreen and select “New Korean”. If the task editing screen is shown, you can edit in the same way as editing on the basic BlackBerry task editing screen.



b. Open Korean

If you want to revise an existing task into Korean, select “open Korean” from the menu.



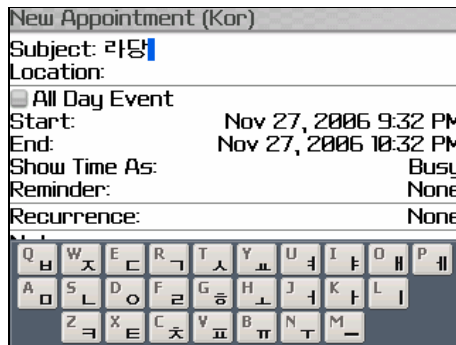
c. Quick Korean

Please refer to “Quick Korean” in below section.

7. Calendar

a. New Korean

If you want to add a new Korean appointment entry, use the trackwheel to show the menu onscreen and choose New Korean. If the editor window for Korean appointment entry shows, make entries in the same way as with the basic BlackBerry appointment editing screen.



b. Open Korean

“Open Korean” menu is for changing the character set. Normally, it would be better to use “open” menu, as by using “Open Korean” you may not be able to view previously-entered Korean characters in the “location” field.

If it is a repeated schedule, it cannot be opened by selecting “open Korean” from calendar.

You cannot set a relative date under a repeated schedule in the Korean appointment editor.

c. Quick Korean

Please refer to “Quick Korean” in below section.

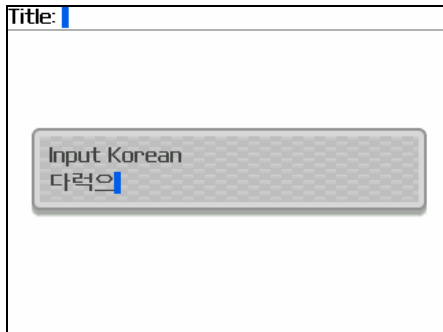
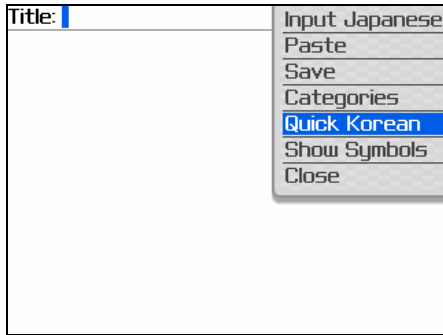
8. Quick Korean

Quick Korean expands the system menu to allow you to enter Korean from most of the applications in a simple way.

Quick Korean dialogue does not support English and Chinese character entry and does not show a virtual keyboard onscreen.

To use Quick Korean, select input control and click the trackwheel to show the menu. Then, select “Quick Korean” item at the top.

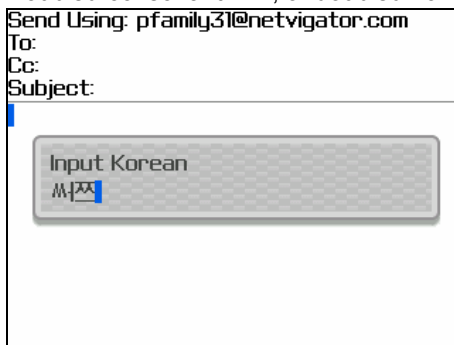
eg in MemoPad,



By pressing the trackwheel, Korean characters will be pasted in the corresponding area of memo:



Doubled-consonant “ ”, or doubled-vowel “ ” characters can be typed by pressing Num or Cap keys.



“Quick Korean” limitations:

- No QWERTY virtual keypad
- Not support conversion from Korean character to Chinese character
- Not able to type other languages in Quick Korean panel



Removal of Korean Character Input

1. To uninstall the old version, please select “options” > “advanced options” > “applications” and choose “Eoneo Korean language support”.
2. Click trackwheel to popup the menu.
3. Select “delete” from the menu to delete “Eoneo Korean language support”. This may require you to reboot your BlackBerry.